

## The portable USB Smart Card interface

**GemPC Key is a new, cost-effective reader for PC  
logon applications and GSM card management**



Market pressure is driving down the cost of smart card readers, whilst expecting portable tokens with increased efficiency and a broad range of on-board security application like digital signature, user authentication and secure on-line transactions.

Gemplus' GemPC Key delivers the solution in the shape of a secure USB plug-in smart card interface for applications such as home-banking, loyalty, and networks services.

GemPC Key offers all the power of a multi-application dynamic smart card in a USB key, the ideal for users who require a combination of security and portability.

### **Secure, portable and customizable**

GemPC Key is made of tough plastic and, since it is smaller than a conventional house key, can be easily carried on a key ring. GemPC Key is available in a variety of colors and can be customized with graphics, logos etc.

### **Easy to deploy**

The GemPC Key plug-in reader is distributed independently of the plug-in smart card, facilitating production, issuance, and marketing applications.

### **Easy to install**

GemPC Key is a plug & play device, requiring no additional cable or wiring. It is ISO7816 compliant, USB full speed and compatible with every Microsoft Windows Operating Systems. GemPC Key is also compliant with Microsoft's CCID driver. Installation and diagnostic tools are provided.

### **Easy to use**

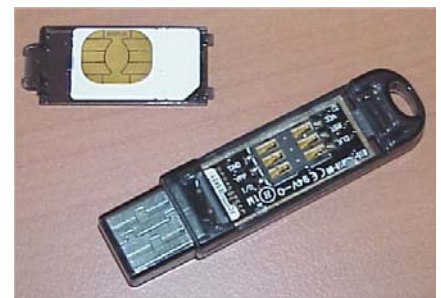
GemPC Key is a true plug and play device. The smart card can be easily removed from the plastic shell. Additional security features are optional.

### **Applications**

- Home-banking
- Electronic coupons/loyalty
- Internet access
- Secure download of content
- Computer access control
- Network security
- People identification
- Access to Wlan network
- And more...

### **Branding on demand**

Gemplus personalizes the casing and the packaging according to the customer's identity. A scalable supply chain, a large mass production capacity and qualified manufacturing processes guarantee the best possible service.



*GemPC Key SIM sized  
Smart Card Reader/Writer*



## Gemplus expertise

Gemplus designs, develops and delivers industry leading Smart Card interface technologies backed by a team dedicated to ensure successful and profitable implementation of our products.

Choosing Gemplus GemPC Smart Card readers also provides access to a full range of associated software, services and support, which have made Gemplus the undisputed world leader in Smart Card enabled solutions.

Working with our Integration and Consulting Services team means that you benefit from many years of experience in the deployment and integration of Smart Card solutions in telecommunications, financial services and e-business security.

Our highly skilled experts provide quick to market, cost-effective, and best-of-breed services: audit and application design, solution and system integration, change management, customer support, training and seminars.

## Technical Specifications

### Host Interface

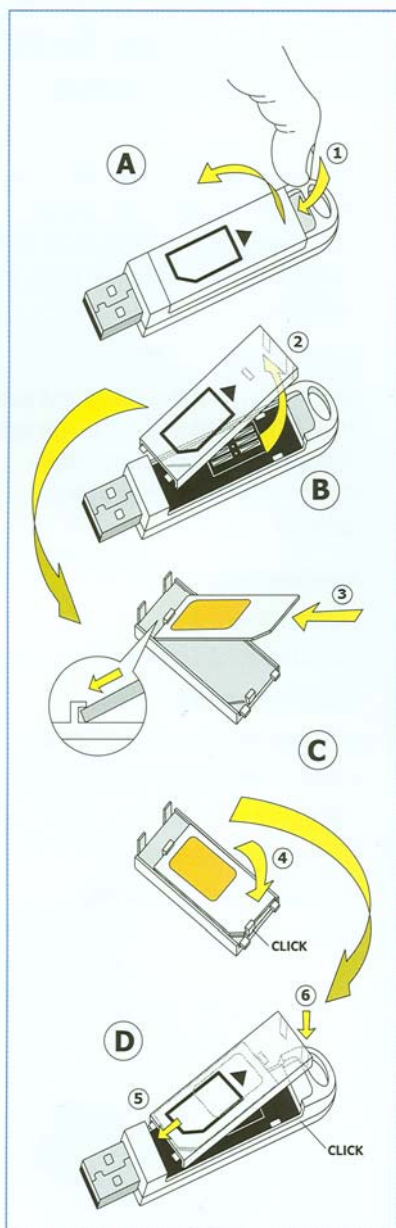
- USB full speed (12Mbps)
- Plug and Play

### Smart Card Interface

GemCore PRO hardware and firmware architecture:

- Plug-in (SIM) card size
- Supports ISO 7816 Class A, B and C cards (5 V, 3 V, 1.8 V)
- Supports all ISO 7816 TA1 parameters (up to 344 Kbps)
- Reads from and writes to all ISO 7816-1,2,3,4 microprocessor cards, T=0 and T=1 protocols
- Supports memory cards using "Memory Card API for GemCore Twin PRO"
- Short circuit detection

## How to insert the plug-in card



## Smart Card Connector

- 8 friction contacts - ISO location
- 1500 insertion cycles

## Human Interface

- LED one color (Green)

## Standards / Certifications

- ISO/IEC 7816-1,2,3,4: IC Cards with contacts
- Microsoft Windows Hardware Quality Labs (WHQL), Windows Logo Program WLP 2.0
- USB 2.0 full speed
- CCID – Chip Card Interface Device 1.0

## API

- Microsoft PC/SC environment with associated drivers

## Operating Systems

- Windows 98, 98SE, Me, 2000, XP, Server 2003, Xp Pro x64, Server 2003 & 64Bit
- Linux, Win CE 4.1, 4.2, 5.0

## Power Supply

- USB type A connector
- Power supply thru USB port
- Operating voltage [4.4 -> 5V]

## Environmental Performances

- CE, FCC part 15 Class B, VCCI, BSMI, C-Tick
- EN 60950 / UL 950 / CSA 950
- Operating temperature: +5 °C / +55 °C
- Storage temperature: -25 °C / +60 °C

## Dimensions

- LWH 64x16x8 mm

